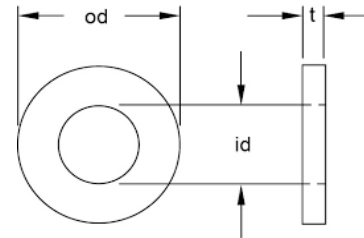


## BS 3410 Table 4 Heavy Gauge Washers



BS 3410 Table 4 Heavy Gauge Washers								
Diameter	3/16	1/4	5/16	3/8	7/16	1/2	9/16	
o/d	0.5	0.62	0.75	0.87	1	1.12	1.25	
t	0.06	0.06	0.07	0.07	0.09	0.09	0.1	

Diameter	5/8	3/4	7/8	1	1.1/8	1.1/4	1.1/2	
o/d	1.37	1.62	1.87	2.12	2.37	2.62	2.11	
t	0.12	0.13	0.14	0.16	0.18	0.18	0.19	

Material	Finish	Diameter
Steel	Self Colour	3/16- 1.1/2
Steel	Zinc (CR3)	1/4 - 1/2
Steel	Zinc (CR3)	5/8 - 1

INFORMATION AND DRAWINGS PROVIDED ARE FOR REFERENCE ONLY